

MARKSMAN™ PLUS

HDD GUIDANCE SYSTEM

The Subsite® Marksman Plus HDD Guidance System provides superior performance in high-interference environments with the industry's widest range of frequencies in a single beacon. It scans and selects the best frequency to avoid interference. Its increased beacon power signal improves performance at extended depths and dual-power-mode provides consistent performance across more housing sizes. Marksman Plus is easy to use with your choice of user interface—Classic View or Marksman View featuring intuitive graphics and clear data—and a simple single toggle control (no extra buttons or triggers) so you're more productive from day one.

*An important part of the
Green Ops process.*



Marksman

Marksman
Plus

 **SUBSITE®**
subsite.com



KEY FEATURES



- Superior performance in high-noise environments with the industry's widest range of frequencies in a single beacon.
- Scans and selects the best frequency to avoid interference.
- Stronger communication between tracker and beacon at extended depths (130+ feet) for more productive bores.
- Intuitive user interfaces for ease of use; choose Classic View or Marksman View.
- Advanced locating methods let you use your preferred method of locating.
 - Walkover Mode: Lets you pinpoint drill-head location with peak and null techniques
 - Drill-To Mode: Enhanced Drill-To range (unrestricted) enables the drill operator to make real-time corrections further out, improving bore accuracy
- Extended Range Mode extends data range and provides stronger depth readings.
- Single toggle control, no extra buttons or triggers to get in the way.
- 0.1% pitch resolution for precision grade work.
- Dual power-mode beacon allows consistent performance across housing sizes.
- Integrated GPS standard (not an add-on) plus Bluetooth® compatibility with your preferred GPS device.
- Fast calibration, with automatic beacon-to-tracker connection, saves time and improves productivity.
- 2,000-foot range between the tracker and drill operator for more productivity.

MARKSMAN PLUS HDD GUIDANCE SYSTEM SPECIFICATIONS

TRACKER

MARKSMAN+

Dimensions	12.5 x 7.0 x 29.1 in. (317.5 x 177.8 x 739.1 mm)
Weight (with battery)	7 lbs (3.2 kg)
Operating temperature	-4 to 140°F (-20 to 60°C)
Environmental rating	IP65
Power source	Li Ion (Inspired Energy NF2047QE34)
Battery life	Up to 16 hours
Display	TFT-LCD 5 in. WVGA (800 x 480 x RGB)
Audio output	Speaker
Telemetry range	2000 ft (610 m)
Telemetry channels	5-12
Accuracy	+/- 5% over testable range

BEACON

M17+ WITH MARKSMAN+

Receiving frequencies	32
Frequency range	1.9 to 46 kHz
Depth with normal power beacon	95 ft (28.9 m)
Depth with high power beacon	130 ft (39.6 m)
Battery Life Range (normal power)	60 hrs
Battery Life Range (high power)	30 hrs

M17 WITH MARKSMAN+

Receiving frequencies	6
Frequency range	12 to 38 kHz
Depth with normal power beacon	70 ft (21.3 m)
Battery Life Range (normal power)	80 hrs

Depth range numbers are based on SAE Standard J2520, and are dependent on battery type, frequency and housing type.

DISPLAY

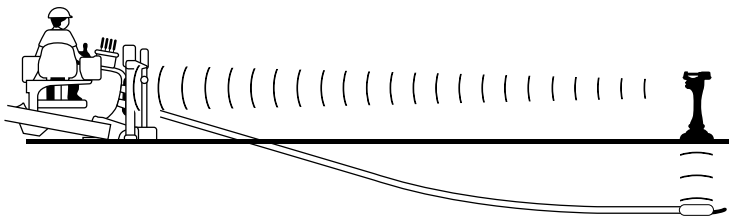
Operating temperature	-4 to 140°F (-20 - 60°C)
Environmental rating	IP66
Power source	Powered off the HDD unit power
Display	Hi-resolution graphic
Telemetry range	2000 ft (610 m)*
Telemetry channels	5-12

COMMANDER 7 DISPLAY

Dimensions	10 x 3.7 x 6.1 in. (254 x 94 x 155 mm)
------------	--

TD RECON IN-DASH DISPLAY

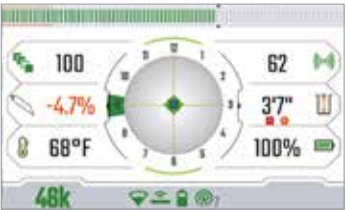
Dimensions	7 x 7 x 6.5 in. (177.8 x 177.8 x 165.1 mm)
------------	--



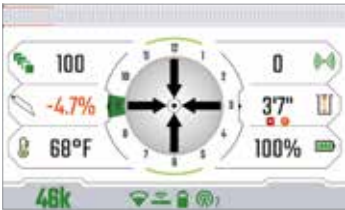
Drill-To™ Tracker



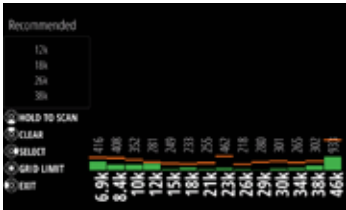
Marksman™ View, Peak Locate



Marksman™ View, Null Locate



Classic View, Null Locate



Bore-Path Analyzer



Commander 7 Frequency Change Sequence



Every step of the Green Ops process utilizes modern data-sharing technology to improve the accuracy and efficiency of the task at hand. Integrating these tools into your bore routine can reduce your risk of striking something underground, while increasing your productivity and profitability. **Save time. Make money. With Green Ops.**

Learn more at
SubsiteGreenOps.com

*Due to regulations in some countries, and RF interference in the area, telemetry range may be reduced. See your Ditch Witch® dealer for more information.



Classic View, Peak Locate





MARKSMAN™

HDD GUIDANCE SYSTEM

The Subsite® Marksman HDD Guidance System provides the superior performance in high-interference environments you need, without any extra features you don't. Marksman's simplified approach makes it easy to use, even for new operators. A single toggle control (no extra buttons or triggers) ensures you're more productive from day one, while a choice of user interfaces—Classic View or Marksman View featuring intuitive graphics and clear data—provides a familiar feel to experienced operators. Add in long-lasting beacon battery life (80 hours) and you're ready to take on job after job, day after day.

An important part of the Green Ops process.



KEY FEATURES

- Superior performance ideal for high-noise environments.
- Choose your user interface—Classic View or Marksman View.
- Advanced locating methods let you use your preferred method of locating.
 - Walkover Mode: Lets you pinpoint drill-head location with peak and null techniques
 - Drill-To Mode: Enhanced Drill-To range (unrestricted) enables the drill operator to make real-time corrections further out, improving bore accuracy
- High-resolution, full-color, 5-inch TFT LCD screen, optimized for outdoor viewing.
- Single toggle control, no extra buttons or triggers to get in the way.
- Extended Range Mode extends data range and provides stronger depth readings.
- 2,000-foot range between the tracker and drill operator for more productivity.
- Automatic Bluetooth tracker-beacon connection for no-hassle connectivity.
- Fast calibration, with automatic beacon-to-tracker connection, saves time and improves productivity.
- 0.1% pitch resolution for precision grade work.
- 80 hours of battery life for more uptime on the job.
- 100% compatible with the Subsite Field Scout™ bore planning app to minimize risk and make the actual drill time more effective and efficient.



MARKSMAN HDD GUIDANCE SYSTEM SPECIFICATIONS

TRACKER

MARKSMAN

Dimensions	12.5 x 7.0 x 29.1 in. (317.5 x 177.8 x 739.1 mm)
Weight (with battery)	7 lbs (3.2 kg)
Operating temperature	-4 to 140°F (-20 to 60°C)
Environmental rating	IP65
Power source	Li Ion (Inspired Energy NF2047QE34)
Battery life	Up to 16 hours
Display	TFT-LCD 5 in. WVGA (800 x 480 x RGB)
Audio output	Speaker
Telemetry range	2000 ft (610 m)
Telemetry channels	5-12
Accuracy	+/- 5% over testable range

BEACON

M17 WITH MARKSMAN

Receiving frequencies	6
Frequency range	12 to 38 kHz
Depth with normal power beacon	70 ft (21 m)
Battery Life Range (normal power)	80 hrs

M17+ WITH MARKSMAN

Receiving frequencies	6
Frequency range	12 to 38 kHz
Depth with normal power beacon	95 ft (28.9 m)
Depth with high power beacon	130 ft (39.6 m)
Battery Life Range (normal power)	60 hrs
Battery Life Range (high power)	30 hrs

Depth range numbers are based on SAE Standard J2520, and are dependent on battery type, frequency and housing type.

DISPLAY

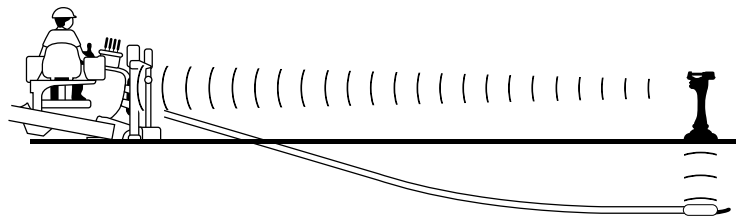
Operating temperature	-4 to 140°F (-20 - 60°C)
Environmental rating	IP66
Power source	Powered off the HDD unit power
Display	Hi-resolution graphic
Telemetry range	2000 ft (610 m)*
Telemetry channels	5-12

COMMANDER 7 DISPLAY

Dimensions	10 x 3.7 x 6.1 in. (254 x 94 x 155 mm)
------------	--

TD RECON IN-DASH DISPLAY

Dimensions	7 x 7 x 6.5 in. (177.8 x 177.8 x 165.1 mm)
------------	--



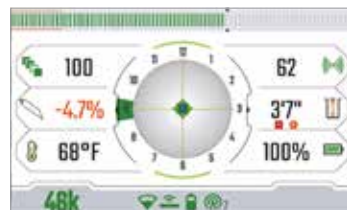
Drill-To™ Tracker



Marksman™ View, Peak Locate



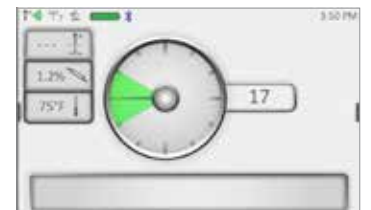
Classic View, Peak Locate



Marksman™ View, Null Locate



Classic View, Null Locate



Commander 7 Frequency Change Sequence



Every step of the Green Ops process utilizes modern data-sharing technology to improve the accuracy and efficiency of the task at hand. Integrating these tools into your bore routine can reduce your risk of striking something underground, while increasing your productivity and profitability. **Save time. Make money. With Green Ops.**

Learn more at
SubsiteGreenOps.com

*Due to regulations in some countries, and RF interference in the area, telemetry range may be reduced. See your Ditch Witch® dealer for more information.

